

SELF-SETTING DIGITAL / ANALOG CLOCK

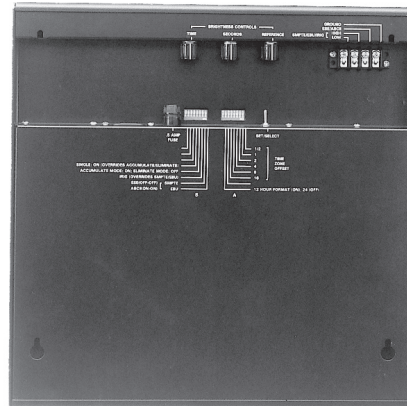
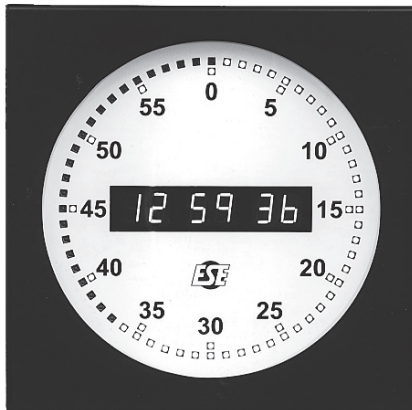
The **LX-5212** is a 12" Digital / Analog Clock. The unit is designed to read and display time as received from most any source of time code. Alternatively, the clock may be manually set and operated in stand-alone mode. Six 1" high LEDs display hours, minutes and seconds. Simultaneously, 60 discrete LEDs simulate the "analog" sweep of the Second Hand. Twelve other discrete LEDs, located around the dial at 5-second increments, stay lit continuously and serve as reference indicators. Three Brightness controls allow the intensity of the three "sets" of LEDs to be set independently.

The unit accepts several types of input data: SMPTE/EBU time code, IRIG-B time code, **ESE** Time Code (or **ESE** "Timer" Code) or ASCII time code on a rear mounted terminal block. If the time code source should fail, the decimal point located between hours and tens of minutes flashes to alert you of the failure, and the clock will continue to keep time using its internal crystal.

The LED Second Hand may be configured in any one of three modes (Accumulate, Eliminate and Single) and is switchable on-the-fly. If receiving 24 hour format time code (or 12 hour format with an AM/PM bit), the unit may be configured for 12 or 24 hour format. The **LX-5212** also provides a Time-Zone offset feature that adds a selected number of hours to the incoming time code value.

Features:

- Reads **ESE**, ASCII, IRIG-B, EBU Or SMPTE Time Code
- 12 Hour & 24 Hour Modes
- Error Indicator
- Trailing, Leading And Single "Second-Hand" Modes
- Also Able To Read **ESE** "Timer" Code
- Stand - Alone & Reader Modes
- Self Setting
- One-Inch High Amber Digital Display
- Three Separate Brightness Controls
- Simple Installation & "Hands-Off" Operation
- 12" Dial
- Rack Mount, 220 VAC & "UL" Options
- Time Zone Offset
- Completely Silent



LX-5212 can also receive "Timer" code from any **ESE** "Up" or "Up/Down" Timer (with or without tenths of seconds) and display Timer information with Second-Hand fully operational. When counting "Down", a minus sign "-" appears to the left of the minutes display. If displaying tenths of seconds, the minus sign is omitted.

Optional rack-mounting side flanges may be specified. An external UL-approved wall-mount transformer is also available; when this option is ordered, the usual AC line & internal transformer are eliminated. 110-120 VAC operation is standard (220-240 VAC optional).

Specifications

- Inputs:** SMPTE / EBU: 10k Ω , Balanced Or Unbalanced, 100mVpp to 10 Vpp
ESE / ASCII: 120k Ω , Unbalanced, **ESE** Time (Timer) Code or RS-232C ASCII
 IRIG-B: Impedance: 25k Ω Minimum; Mark Amplitude: 10 Vpp Maximum, 0.3 Vpp Minimum; Mark To Space Ratio: 3:1 Nominal
- ESE Format:** **ESE** "TC89" or "TC90"
- ASCII Format:** 9600 Baud, 8 Data, No Parity, 1 Stop HHMMSS<CR>
 (HH=Hours MM=Minutes SS=Seconds <CR> = Carriage Return)
- Power Required:** 110-120 VAC, 50-60 Hz, 15 Watts Max.
- Mechanical:** 13.95" H x 13.95" W x 3.45" D, Wall Mount Enclosure; 11.5" Diameter Face
- Options:** J, P, UL

